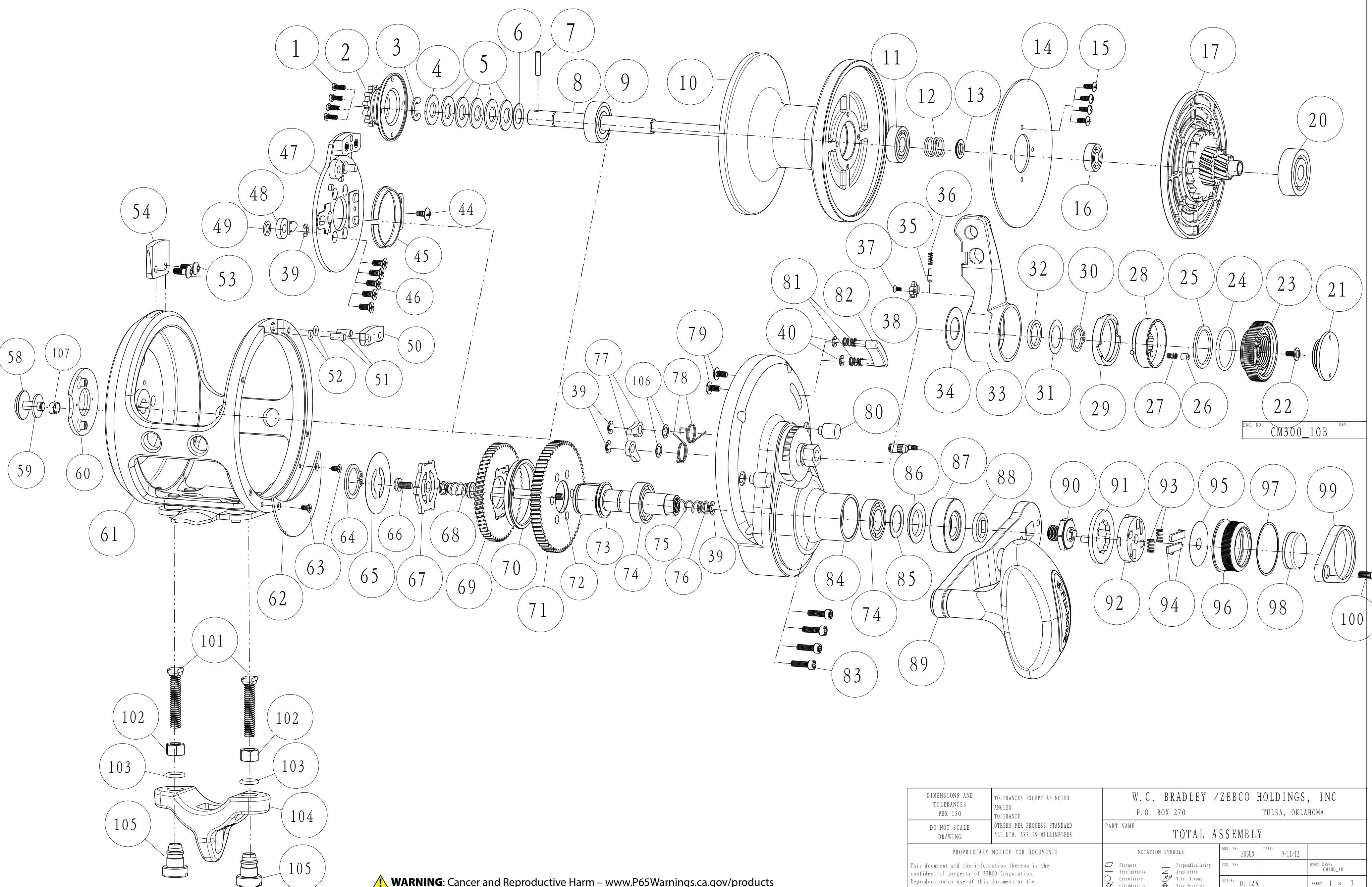


# MA40II & MA50II EXPLODED VIEW



DWG. NO. CM300\_10B REV.

DIMENSIONS AND TOLERANCES PER ISO DO NOT SCALE DRAWING	TOLERANCES EXCEPT AS NOTED ANGLES TOLERANCE OTHERS PER PROCESS STANDARD ALL DIM. ARE IN MILLIMETERS	W.C. BRADLEY /ZEBCO HOLDINGS, INC P.O. BOX 270 TULSA, OKLAHOMA	
		PART NAME <b>TOTAL ASSEMBLY</b>	
PROPRIETARY NOTICE FOR DOCUMENTS This document and the information thereon is the confidential property of ZEBCO Corporation. Reproduction or use of this document or the information hereon for any purpose without the express written consent of ZEBCO Corporation is strictly prohibited.		NOTATION SYMBOLS Flatness Straightness Circularity Cylindricity Surface Profile Line Profile Parallelism	DEN. BY: HOGUN DATE: 9/11/12 CD. BY: MODEL NAME: CM300_10 SCALE: 0.125 SHEET 1 OF 1 DRW. No.: CM300_10B

**WARNING:** Cancer and Reproductive Harm – [www.P65Warnings.ca.gov/products](http://www.P65Warnings.ca.gov/products)

## FinNor Marquesa Two Speed Lever Drag -MA40II,MA50II(OPEN TOP)

Key No.	Description	Part No.			Key No.	Description	Part No.		
		MA40II	MA50II	Q'TY			MA40II	MA50II	Q'TY
1	Screw	LF057-01	☺	4	59	Bait Click Lever Washer -A	CF032-01	☺	1
2	Bait Click Ratchet Assembly	GM329-01	☺	1	60	Badge	CF148-01	☺	1
3	E-Ring	DF092-01	☺	1	61	Frame Assembly	GM301-01	HM301-01	1
4	Collar	DF081-02	☺	1	62	Drive Gear Cover	CM143-01	☺	1
5	Drag Spring	JF046-01	☺	5	63	Screw	CF107-01	☺	2
6	Washer	CF121-01	☺	1	64	External Ring	AM075-01	☺	1
7	Spool Shaft Pin	DF093-01	☺	1	65	Dust Cover - A	AM038-01	☺	1
8	Spool Shaft	CM015-01	DM015-01	1	66	Screw	MF053-01	☺	1
9	Ball Bearing	VF017-02	☺	1	67	Link	LF036-02	☺	1
10	Spool	CM021-01	DM021-01	1	68	Coil Spring - Lower	VF070-01	☺	1
11	Ball Bearing	KF017-01	☺	1	69	Drive Gear - Low	DM012-01	☺	1
12	Spring	CF040-01	☺	1	70	Spacer	LF160-02	☺	1
13	Collar	BF094-01	☺	1	71	Drive Gear - High	CM012-01	☺	1
14	Drag Disc	CM059-01	☺	1	72	Shift Shaft	AM146-01	☺	1
15	Screw	CM057-01	☺	1	73	Crank Shaft	AM008-01	☺	1
16	Ball Bearing	CF117-02	☺	1	74	Ball Bearing	CF017-02	☺	2
17	Drag Plate Assembly	CM348-02	☺	1	75	Coil Spring - Upper	AM070-01	☺	1
20	Ball Bearing	JF017-01	☺	1	76	Spacer	AM081-01	☺	1
21	Pre Set Knob Cover	CF110-01	☺	1	77	Anti Reverse Pawl	DF063-02	☺	2
22	Screw	CX076-04	☺	1	78	Stopper Spring	CF096-01	☺	2
23	Pre Set Knob	CF029-03	☺	1	79	Screw	QW123-10	☺	2
24	O-Ring	CF101-01	☺	1	80	Locating Collar	DF118-01	☺	2
25	Friction Washer	DF121-01	☺	1	81	Strike Button Pin Spring	CF022-01	☺	2
26	Click Pin	CF098-01	☺	1	82	Strike Button	CF062-02	☺	1
27	Click Spring	DF114-01	☺	1	83	Screw	CF053-01	☺	4
28	Drag Cam B Assembly	CF353-01	☺	1	84	Gear Side Cover Assembly	CM324-01	☺	1
29	Drag Cam A	CF028-01	☺	1	85	Adjustment Washer	DF035-01	☺	1
30	External Ring	JF075-01	☺	1	86	Rubber Seal	CM172-01	☺	1
31	Adjustment Washer	CF038-02	☺	1	87	Handle Washer	CM054-01	☺	1
32	Bushing	DF017-01	☺	1	88	Spacer	AM160-01	☺	1
33	Drag Lever	CM055-01	☺	1	89	Handle Assembly	CM318-01	☺	1
34	Drag Lever Washer	BM038-01	☺	1	90	Handle Nut	AM003-01	☺	1
35	Click Pawl	CM098-01	☺	1	91	Handle Nut Retainer	AM034-01	☺	1
36	Click Spring	CM114-01	☺	1	92	Trip Holder	BM159-01	☺	1
37	Screw	DW107-02	☺	1	93	Coil Spring	MF070-01	☺	2
38	Cover	CM161-01	☺	1	94	Plate	LF104-01	☺	2
39	E-Clip	NX092-01	☺	4	95	Dust Cover - B	BM035-01	☺	1
40	E-Clip	NX090-01	☺	2	96	Shift Knob	AM158-01	☺	1
44	Tapping Screw	QW125-02	☺	1	97	Washer	AM035-01	☺	1
45	Click Spring	DF022-01	☺	1	98	Shift Button	AM062-01	☺	1
46	Screw	TW107-04	☺	5	99	Shift Knob Holder	AM159-01	☺	1
47	Click Plate Holder	CM129-10	☺	1	100	Handle Nut Screw	MF076-01	☺	1
48	Bait Click Pawl	DF109-02	☺	1	101	Rod Clamping Bolt	CF125-01	☺	2
49	Bait Click Lever Washer -B	CF035-01	☺	1	102	Nut	JF003-01	☺	2
50	Harness Lug Spacer - Right	CM160-01	☺	1	103	O-Ring	LF101-01	☺	2
51	Pin	CM093-01	☺	2	104	Rod Clamp	XF154-01	☺	1
52	O-Ring	CM101-01	☺	2	105	Rod Clamp Nut	CF161-01	☺	2
53	Screw	CM123-01	☺	2	106	Mylar Washer	BAA076-01	☺	2
54	Harness Lug Spacer - Left	DM160-01	☺	1	107	Bait Click Lever Bushing	CM088-01	☺	1
58	Bait Click Lever	CF109-01	☺	1					

Rev.2 7/26/2012

Rev.3 9/5/2012

Rev.B 2/1/2013

Rev.C 10/19/2016

ECN00135